

PUNCH'INOX – Installation

Stainless steel bumper

Height	100	150	200
Reference	LI100INB	LI150INB	LI200INB

Depth: 32mm

Stainless steel bumper thickness: 12/10

Material: brushed 304L stainless steel

Length: on request (2500mm maximum)

Set includes:

- 1 stainless steel bumper
- 1 upper mounting rail
- 1 bottom mounting rail

End piece

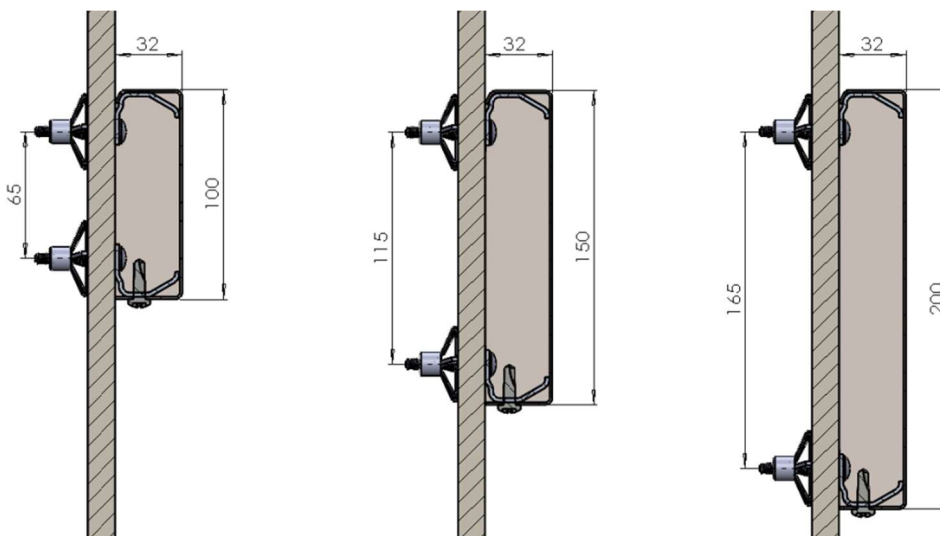
Height	100	150	200
Reference	LI100INB+E	LI150INB+E	LI200INB+E

Material: 304L brushed stainless steel

Thickness: 12/10

Bumper assembly: Supplied welded and burred

Section and implementation principle



www.spm-international.com

SPM international S.A.S.
16 rue Isabelle Eberhardt - CS 92083
31019 Toulouse Cedex 2 - France

Tél. : +33 (0)5 34 39 41 00

export@spm.fr

S.A.S. WITH SHARE CAPITAL OF 2 718 726.99 €
N° SIRET 419 396 965 00040 – APE 4673B
R.C.S. 419 396 965 TOULOUSE
EU VAT Number - FR 27 419 396 965

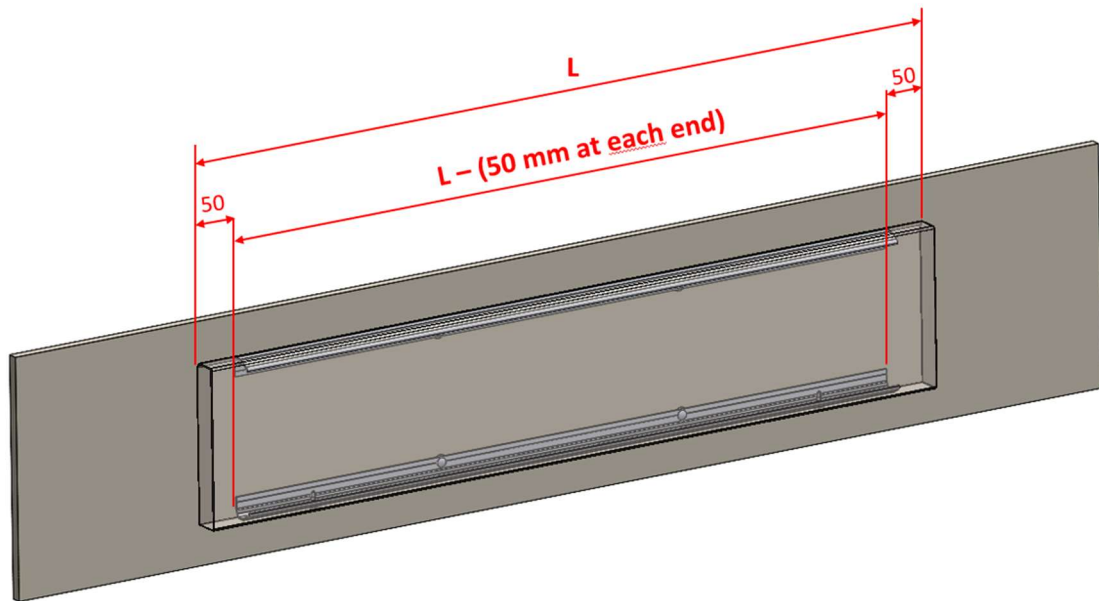


Fig.A

1. Cut the lower and upper aluminum mounting rails to the length of the stainless steel bumper minus 50mm at each end (**Fig. A**).
Note: lower and upper rails are identical.
2. Drill holes in the aluminum mounting rails every 333mm. If necessary, drill additional $\varnothing 5.5$ mm holes along the center V-notch.

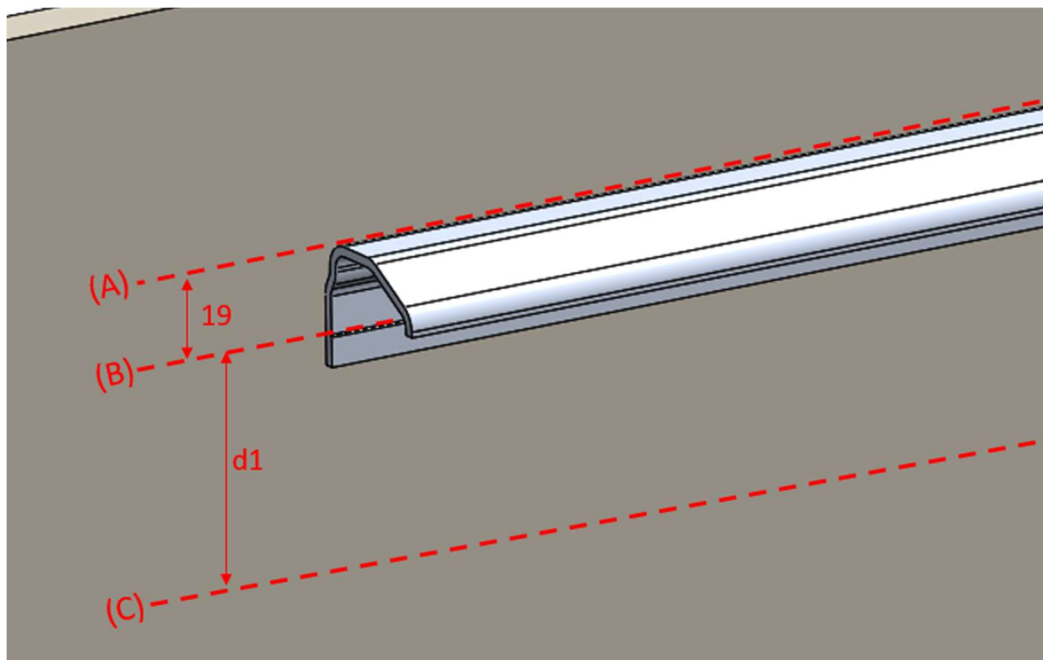


Fig. B

3. Using a laser level, locate the top of the aluminum mounting profile (A). Measure 19 mm from this line (A) and mark line (B) on the wall.

www.spm-international.com

SPM international S.A.S.
16 rue Isabelle Eberhardt - CS 92083
31019 Toulouse Cedex 2 - France

Tél. : +33 (0)5 34 39 41 00
export@spm.fr

S.A.S. WITH SHARE CAPITAL OF 2 718 726.99 €
N° SIRET 419 396 965 00040 – APE 4673B
R.C.S. 419 396 965 TOULOUSE
EU VAT Number - FR 27 419 396 965

	Bumper height		
	100	150	200
d1	65	115	165

Chart 1

4. From this line (B), measure **d1** using the table (**Chart 1**) and draw another line (C). (**Fig.B**)

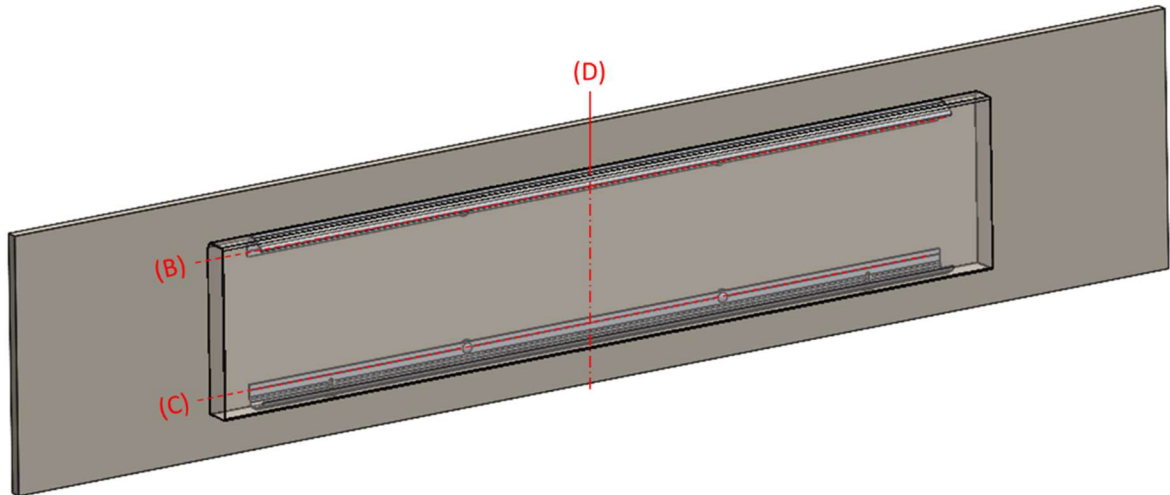


Fig.C

5. Position the upper aluminum mounting rail against the wall, aligning the holes with line B. Center the upper aluminum mounting rail on the vertical centerline (D) of the stainless steel bumper. Use the holes in the mounting rail as a template to mark the position of the holes in the wall (**Fig. C**).
6. Repeat the same process for the lower aluminum mounting rail. Place the lower aluminum mounting rail against the wall, aligning the holes with line C. Use the holes in the mounting rail as a template to mark the position of the holes in the wall (**Fig.C**).
7. Fasten the upper and lower aluminum mounting profiles to the wall using appropriate fasteners (not supplied).
8. Install the stainless steel bumper by clipping it to the upper aluminum mounting profile.

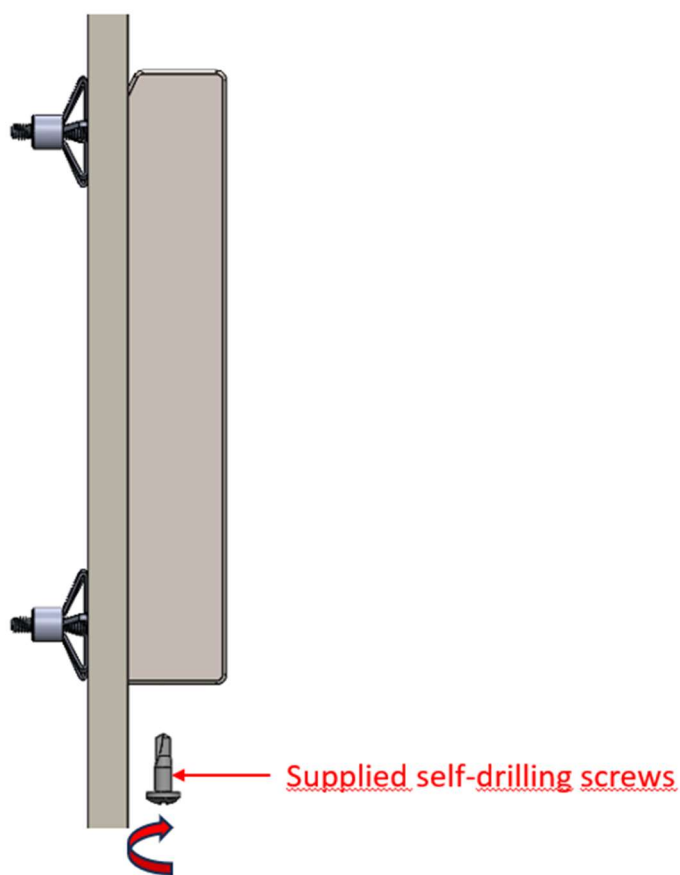


Fig.D

9. Use the supplied self-drilling screws to secure the stainless steel bumper to the lower aluminum mounting rail through the pre-drilled holes in the bumper (**Fig. D**).